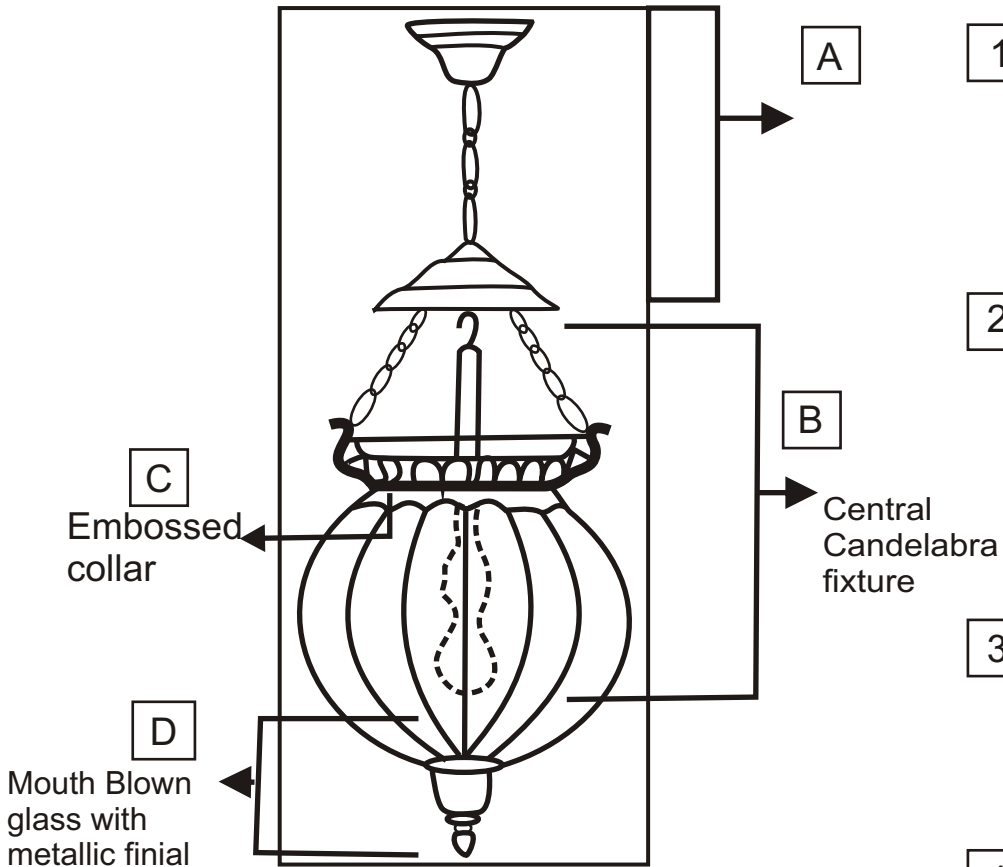


# INSTRUCTION FOR ASSEMBLY OF PUMPKIN SHAPED LIGHT



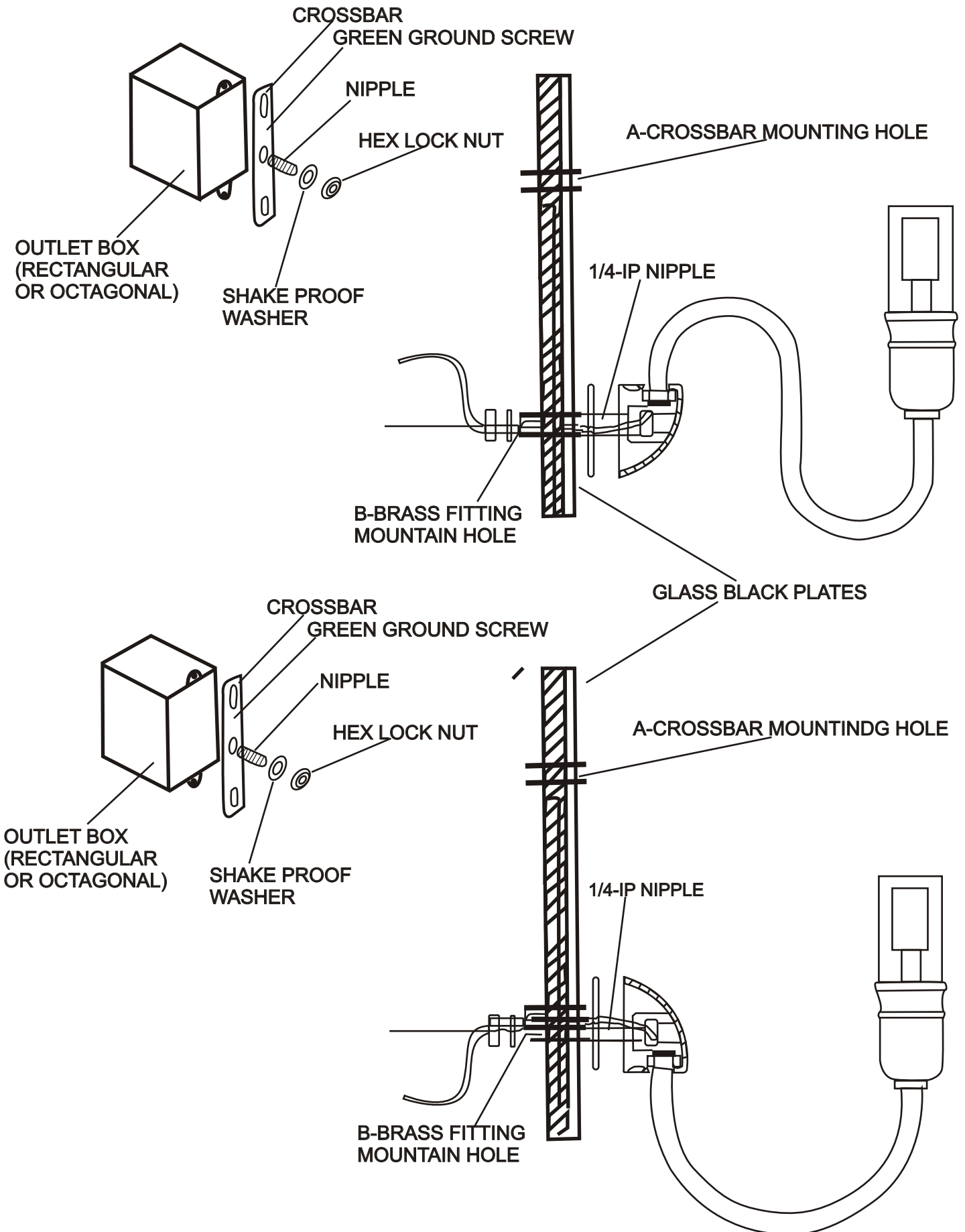
1 Fix the metallic canopy to ceiling along with chain **A**

2 Install the central candelabra fixture to the hook below the glass canopy complete the electricals remove connector and pass with wire through glass canopy to ceiling canopy **B**

3 Install embossed metallic collar on to glass jar **C**

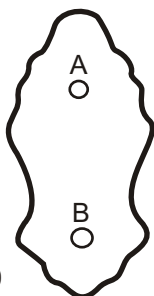
4 Hook up small chains to decorative hooks on collar holding the glass jar **D**

# FIGURE 1

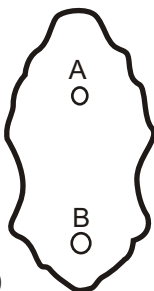


## ASSEMBLY / INSTALLATION INSTRUCTIONS

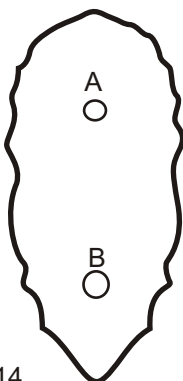
### GLASS BACK PLATES



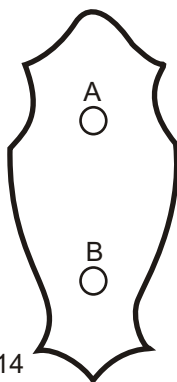
Ws10110



Ws10210



Ws10314



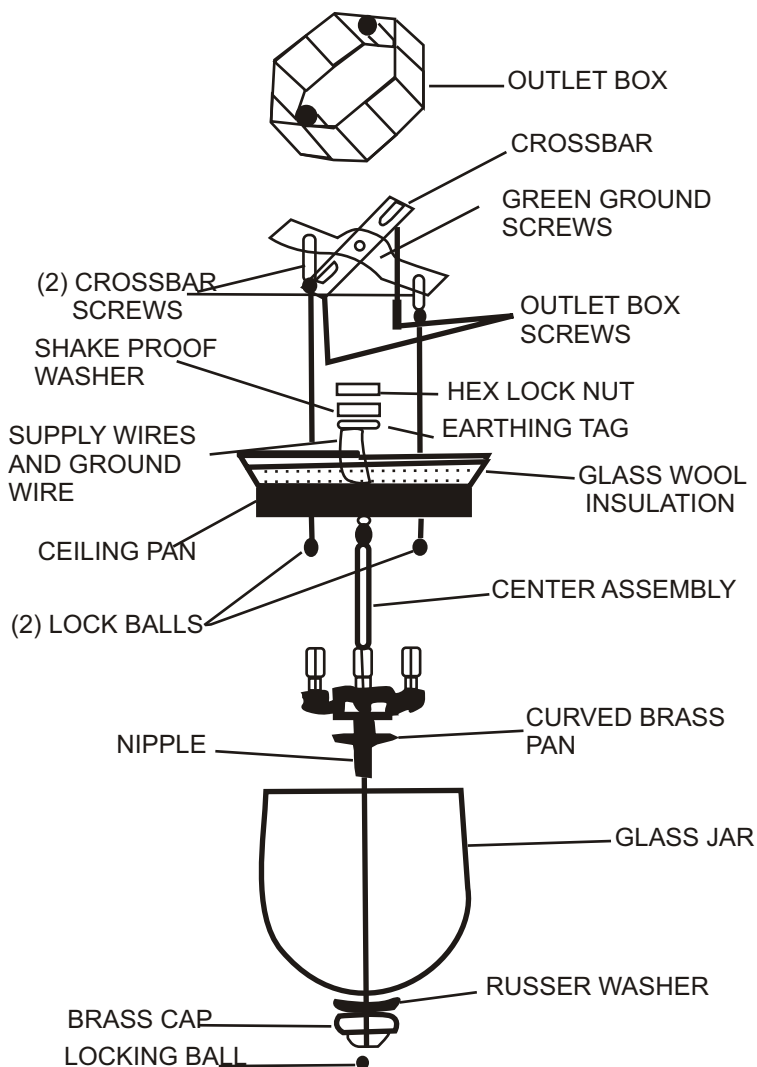
Ws10414

1. Before beginning assembly / installation, be sure to carefully unpack all parts referring to the illustration FIGURE 1 for parts identification.
2. Turn the electrical power to the installation point off.
3. Fasten the CROSSBAR to the OUTLET BOX using (2) OUTLET BOX SCREWS (not supplied)
4. Locate NIPPLE and thread into the center of the CROSSBAR. Pass SHAKE PROOF WASHER onto NIPPLE along with HEX LOCK NUT and tight it until snug.
5. Fix the ¼ - IP NIPPLE into the base of the brass FITTING BASE. Pass this nipple along with FIXTURE SUPPLY WIRES through the GLASS BLACK PLATE (BRASS FITTING HOLE-B), along with EARTHING TAG, SHAKE PROOF WASHER and HEX LOCK NUT. Tighten it onto the GLASS BACK PLATE until snug.
6. **Making the Connection** : (We recommend (2) people for this step). Using the GREEN GROUND SCREW on the CROSSBAR, connect the HOUSE GROUND WIRE and the EARTHING WIRE to the CROSSBAR. Using wire connectors (not supplied) connect the HOUSE WHITE WIRE to the FIXTURE SUPPLY WIRE. Connect the HOUSE BLACK WIRE (OR RED) to FIXTURE SUPPLY WIRE. Wrap all connections with approved electrical tape.
7. Carefully tuck all wiring into the OUTLET BOX, and position the GLASS BACK PLATE ASSEMBLY over the CROSSBAR NIPPLE. Pass the NIPPLE through the MOUNTAIN HOLE (A) on the GLASS BACK PLATE along with \_\_\_\_\_ tighten until snug to secure GLASS BACK PLATE to the wall.
8. Install bulbs referring to fixture marking and / or labels for maximum wattage. Complete installation of any CLOTH SHADES (if applicable)
9. Proceed to turn power to completed installation point ON.

**IF IN DOUBT ABOUT ELECTRICAL INSTALLATION.  
CONSULT A LICENSED ELECTRICIAN**

- A - CROSSBAR MOUNTING HOLE
- B - BRASS FIT MOUNTING HOLE

## ASSEMBLY / INSTALLATION INSTRUCTIONS



1. Before beginning assembly / installation, be sure to carefully unpack all parts referring to the illustration FIGURE 1 for parts identification.
2. With power to the installation point OFF, attach the CROSSBAR with MOUNTING SCREWS to the ceiling mounted OUTLET BOX with (2) OUTLET BOX SCREWS (not supplied).
3. Locate the CENTER ASSEMBLY and unravel the SUPPLY WIRES and GROUND WIRE. Proceed to pass the wires along with CENTER ASSEMBLY through the bottom center of the CEILING PAN and GLASS WOOL INSULATION. Carefully pull the wires through and put EARTHING TAG, SHAKE PROOF WASHER and LOCK NUT along the wire and tighten it until snug.
4. Making the Connection : (We recommended (2) people for this step). Position the top of the CEILING PAN over the OUTLET BOX and attach the HOUSE GROUND WIRE to the FIXTURE GROUND WIRE. Proceed to attach both to the CROSSBAR GREEN GROUND SCREW. Using wire connectors (not supplied) connect the HOUSE WHITE WIRE to the FIXTURE SUPPLY WIRE. Connect the HOUSE BLACK WIRE (OR RED) to FIXTURE SUPPLY WIRE. Wrap all connections with approved electrical tape.
5. With proper connections made, secure CEILING PAN to ceiling by aligning (2) MOUNTING HOLES at top of the CEILING PAN WITH (2) CROSSBAR SCREWS. Pass screws with (2) LOCK BALLS. Be sure there are no trapped or pinched wires.
6. Install bulbs referring to fixture marking and / or labels for maximum wattage.
7. Position the GLASS JAR and align the center hole at the bottom. Pass RUBBER WASHER BRAS CAP,

**IF IN DOUBT ABOUT ELECTRICAL INSTALLATION.  
CONSULT A LICENSED ELECTRICIAN**

# ASSEMBLY INSTRUCTIONS - HUNDILIGHTS

These instructions are provided for your safety. It is very important that they are read carefully and completely before installation. We strongly suggest that all direct wired fixtures be installed by a professional electrician.

## To Assemble :

1. Shut off the main electrical supply from the fuse box / circuit breaker.
2. Ensure the outlet box in the ceiling has string-grounding connection
3. Unscrew the ring nut to slide the canopy on the chain, to make room for easy connections.
4. Fix the mounting strip to the outlet box using mounting screws.
5. The smooth wire is LIVE and the ridged wire is NEUTRAL. Connect these wires to the house wires and insulate properly.
6. Raise the ceiling canopy upto the ceiling and secure it with the ring nut. Make sure the chandelier hangs by the chain and there is no load on the wire.
7. Install Bulbs
8. Put on the metal ring over the glass shade.
9. Hang the metal ring by 3 chain links as shown.
10. Restore the main power supply.

